

FEATURES

- Single threshold for alcove installation.
- SMC Sheet Molding Compound is made from a composite material composed of resin, fiberglass, and stone filler. Compression molded for a precise radius and angles. Strong, lightweight, slip resistant and scratch resistant.
- Designed to replace existing bathtub drain locations. Base uses same footprint and drain location. Beautiful, easy to clean and ultra-safe stone-look slip resistant texture provides comfortable, safe footing.
- Ultra low 2.6" threshold front curb for easy access. Ultra wide 3.5" threshold width to hold modern barn door shower doors. 1" high heavy duty integral tiling flange will not crack on the way to the jobsite.
- Super strong base with ribbed construction. Up to 21% heavier than competitive bases.
- Color matched lift-off drain cover allows for easy cleaning and conceals a conventional shower drain. Eliminates the need for decorative drain covers to match faucetry. Drain not included.
- 10 Year Limited Residential Warranty / 3 Year Commercial Warranty



Optional Stainless Steel Cover

Features an optional stainless steel cover for commercial duty. Made from 304 Stainless Steel.

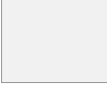



Specified Model

		Drain Location				
	SIZE	Left	Right	Length	Width	Height
<input type="checkbox"/>	60" x 30" x 2.6"	FLU6030L	FLU6030R	60"	30"	2.54"
<input type="checkbox"/>	60" x 32" x 2.6"	FLU6032L	FLU6032R	60"	32"	2.54"

Model	A	B	C	D	E	F	G
FLU6030L/R	60"	30"	8.25"	2.6"	3.5"	14.1"	29.8"
FLU6032L/R	60"	32"	8.25"	2.6"	3.5"	15.1"	31.8"

To Be Specified: Color


<input type="checkbox"/>	31 White			
<input type="checkbox"/>	32 Cameo	White 31	Cameo 32	Grey 39
<input type="checkbox"/>	39 Grey			

Optional : Brushed Stainless Steel Drain Cover

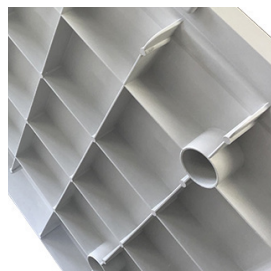
	Model	Size	Corresponding SMFL Base
<input type="checkbox"/>	FLUCVRC30-SS	24.5" X 5"	FLU6030L/R
<input type="checkbox"/>	FLUCVRC32-SS	26.5" X 5"	FLU6032L/R

Compliance Certifications -

Meets or Exceeds the Following Specifications

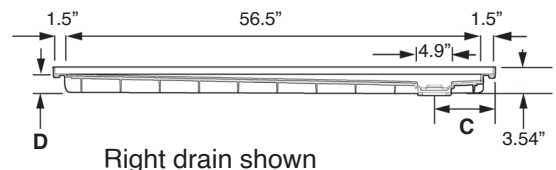
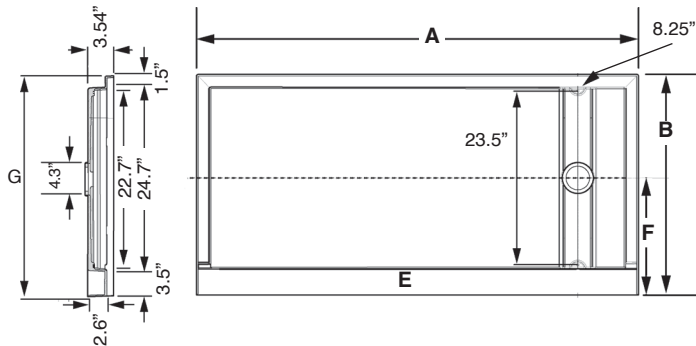
- IGC 154-2012
- ASME A112.18.1 / CSA B125.125.1-11
- IAPMO 
- cUPC®

Slip Resistant Surface



Super Tough Ribbed Structure

FLU Ultra Low linear Base



Right drain shown