

FEATURES

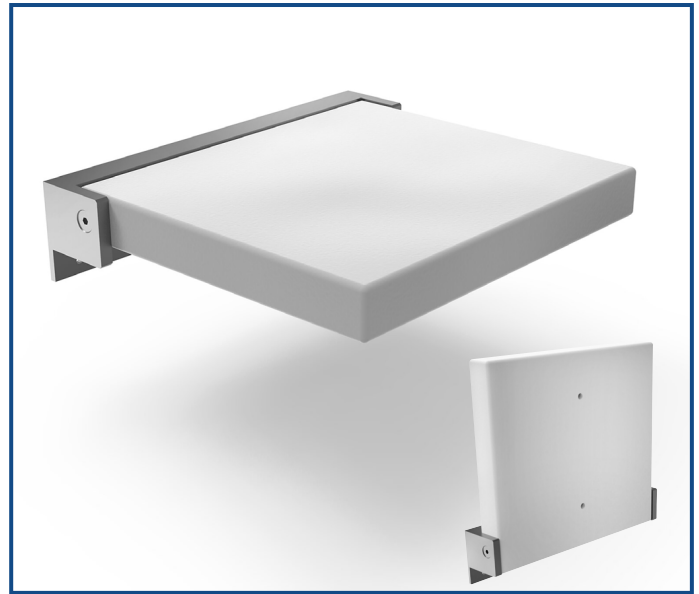
- Foldable Seat
- Seat material is anti-microbial
- Stainless steel mounting bracket for durability
- Holds up to 300 lbs. capacity

WARRANTY

- Lifetime Limited Warranty for residential use
- 5 Year Limited Warranty for commercial use

COLOR & FINISHES

- 2 seat colors available: White (01) & Black (09)
- 4 bracket finishes available (See below)



To Be Specified:

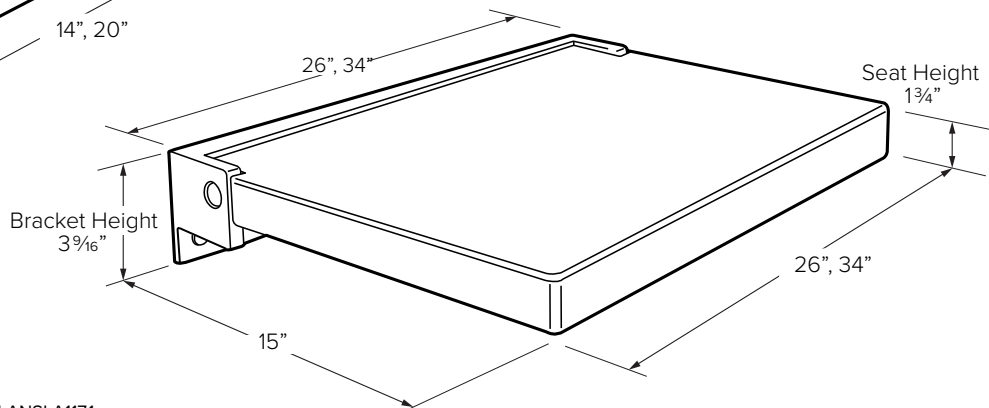
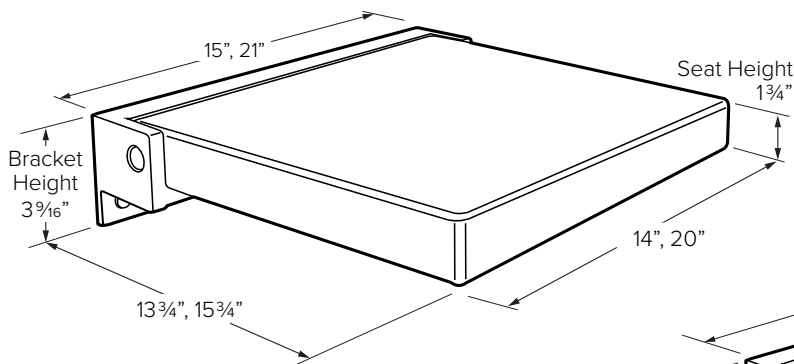
	Model No.	Seat Size W x D x H	Bracket Size W x H	Ship Wt. (lbs)
<input type="checkbox"/>	*PPS1414UP-	14" x 13¾" x 1¾"	15" x 3⅞"	14
<input type="checkbox"/>	PPS1420UP-	20" x 15¾" x 1¾"	21" x 3⅞"	18
<input type="checkbox"/>	PPS1526UP-	26" x 15" x 1¾"	26" x 3⅞"	26
<input type="checkbox"/>	PPS1534UP-	34" x 15" x 1¾"	34" x 3⅞"	31

TO ORDER add finish color after color code (ex. PPS1414IP-01PC)

To Be Specified: Finish

	BRACKET FINISHES	
<input type="checkbox"/>	PC	Polished Chrome
<input type="checkbox"/>	BS	Brushed Stainless
<input type="checkbox"/>	MB	Matte Black
<input type="checkbox"/>	CB	Champagne Bronze

*PPS1414UP- only available in Polished Chrome and Brushed Stainless



Meets the Americans with Disabilities Act guidelines and ANSI A117.1 requirements for accessible and usable building facilities-check local codes when installed per accessibility guidelines of the act.