

FEATURES

- Decorative straight paper holder coordinates with Manhattan bath accessories.
- Concealed mounting.
- Mounting hardware and mounting template included.
- Heavy duty 304 stainless steel.

FINISH

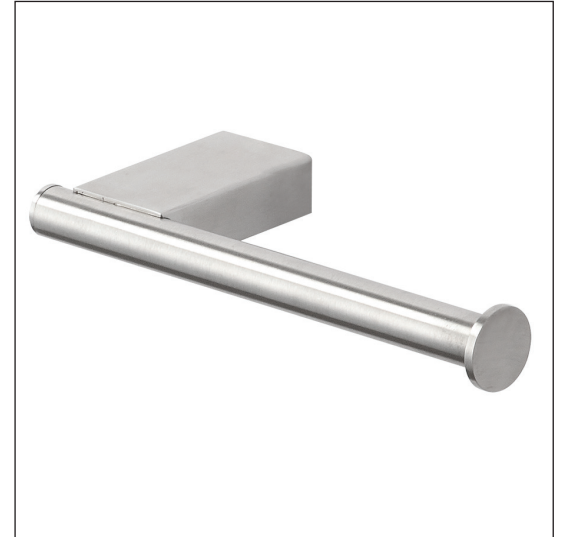
- 3 finishes: polished chrome, brushed stainless, matte black

WARRANTY

- Lifetime Limited Residential / 5 Year Commercial

INSTALLATION REQUIREMENT

- Wood blocking is preferable behind all wall surfaces. Use framing studs for mounting when available. If wood blocking is not available, the following fasteners are suggested: Tile/Masonry-Plastic or lead Anchors Plaster/drywall-Toggle bolts.



TOILETS/LAVS

To Be Specified:

	MODEL NO.	DESCRIPTION	Dia.	Length	Depth	Weight
<input type="checkbox"/>	SMMSPH-	Paper Holder	63/64"	6 59/64"	2 7/8"	0.7 lbs.

TO ORDER add the finish code to end of model number

To Be Specified: Finish

	Finishes
<input type="checkbox"/>	PC Polished Chrome
<input type="checkbox"/>	BS Brushed Stainless
<input type="checkbox"/>	MB Matte Black

